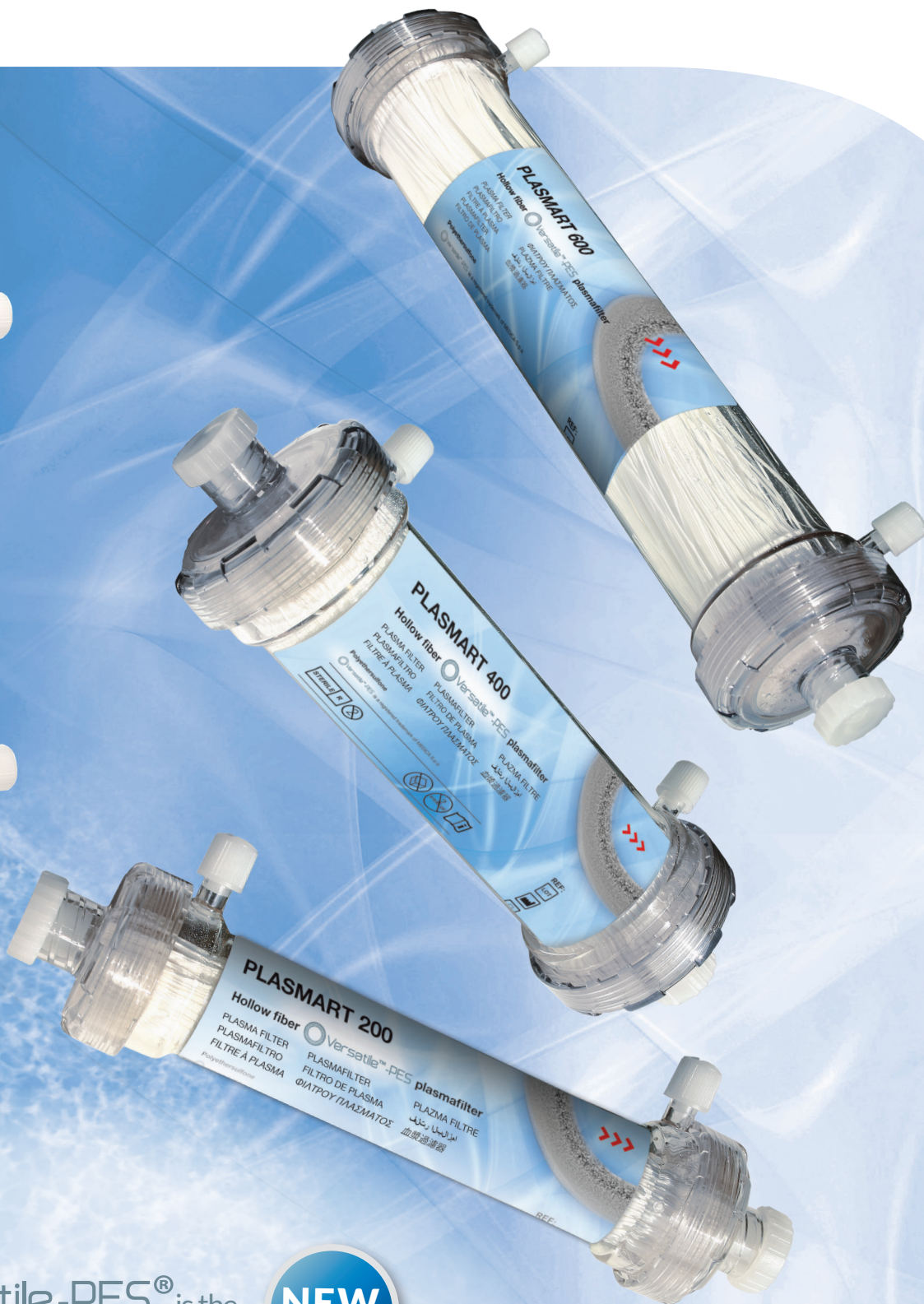


PLASMART



Versatile-PES® PLASMAFILTERS



Versatile-PES® is the
MEDICA hollow fiber membrane
specially developed
for plasma separation

NEW

Gruppo

MEDICA

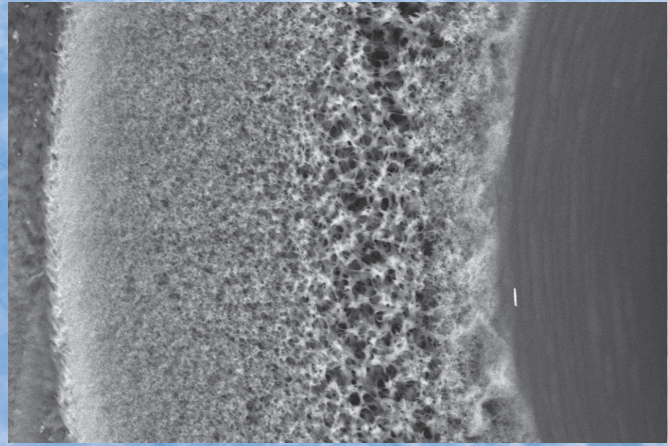
Group

MEMBRANE SPECIFICATIONS AND DATA

Versatile-PES® is the new MEDICA hollow fiber membrane specially developed for plasma separation, it is a polyethersulfone membrane which is used for plasmapheresis and blood donation. The asymmetric structure of Versatile®-PES offers excellent filtration performances.

Versatile-PES® MEDICA membrane has been designed to obtain:

- An optimized diameter and wall thickness to ensure a remarkable fiber mechanical resistance and the highest filtering surface in the minimum space;
- Very smooth internal membrane surface, ensures less damage to red blood cells in the blood stream and minimizes hemolysis risk.
- A high separation performances, in term of plasma proteins crossing the membrane (over 90%);
- An optimized membrane cut off resulting in the possibility to use a significant TMP value.



Versatile-PES® is a registered trade mark of MEDICA S.p.A.

	Plasmart 25	Plasmart 50	Plasmart 100	Plasmart 200	Plasmart 400	Plasmart 600	Plasmart 700	Plasmart 1000
Hollow fiber material	Versatile-PES® (polyethersulfone)							
Membrane area (m ²)	0.01	0.05	0.10	0.20	0.40	0.60	0.70	1.0
Fiber internal diameter (µm)	300							
Fiber external diameter (µm)	470							
Fiber wall thickness (µm)	85							
Fiber length (mm)	60	127	140	140	140	225	225	280
Filter housing internal diameter (mm)	11	14	24	24	38	38	38	43
Internal Fiber volume (ml)	1.2	3.9	8.6	13.2	30.5	48.5	56.6	78.3
Port volume (ml)	0.5	0.5	2.4	2.4	5.6	5.6	5.6	10.0
Priming blood volume (ml)	2.2	4.4	11	15.6	36.1	54.1	62.2	88.3
Max. TMP (mmHg) *	100							
Max. blood flow (ml/min)	20	50	80	100	160	240	280	390
Plasma flow	10-30 % of blood flow							
Potting compound	Polyurethane							
Cartridge housing material	Copolyester BPA FREE or Polycarbonate (PC)							
Cartridge blood port material	Copolyester BPA FREE or Polycarbonate (PC)							
Cartridge blood connectors	LLF	LLM	Twist Lock					
Cartridge filtrate/dialysate connectors	LLF	Female luer lock						Hansen
Unit (mm) Length	90	155	180	180	180	265	265	325
Sterilization method	ETO or Beta Rays							
Product code ETO Sterile	M90291	M03863	M03864	M03865	M03866	M03867	M90018	M03868
Product code Beta Rays Sterile	M90292	M03857	M03858	M03859	M03860	M03861	M90017	M03862
Packaging	Single							

* Tested with human blood (Hct 32 ± 3%; TP 60 ± 5 gr/L)

Distributed by



MANUFACTURER

MEDICA

MEDICA S.p.A.
Via degli Artigiani, 7
41036, Medolla (Modena)
Italia

Phone +39 0535 51159
Fax + 39 0535 52605
info@medica.it
www.medica.it



CE 0476
UNI EN ISO 9001:2015
UNI CEI EN ISO 13485:2016